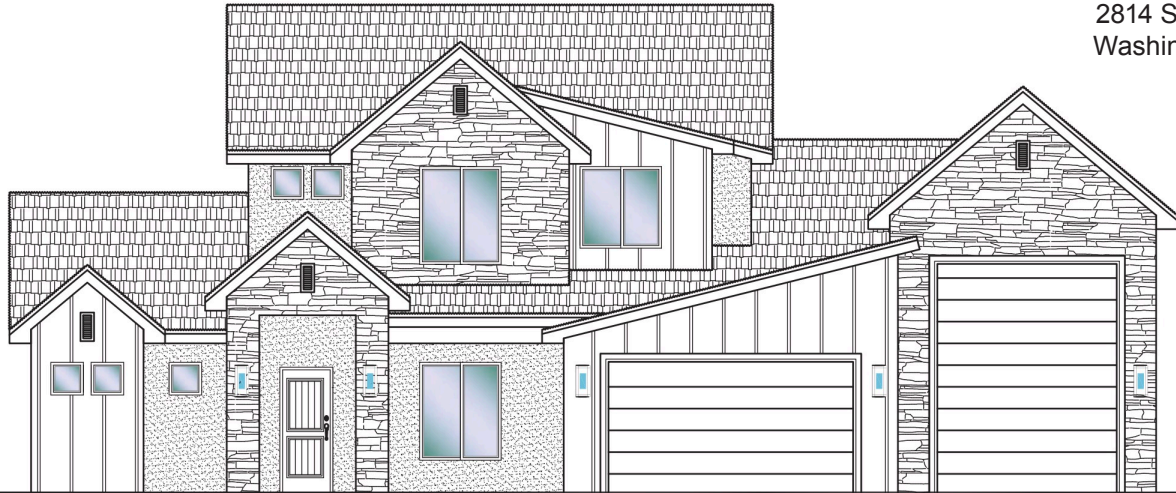




#38 - FOR SALE*
 4 Bed+Den | 3.5 Bath | 3 Car-RV Garage

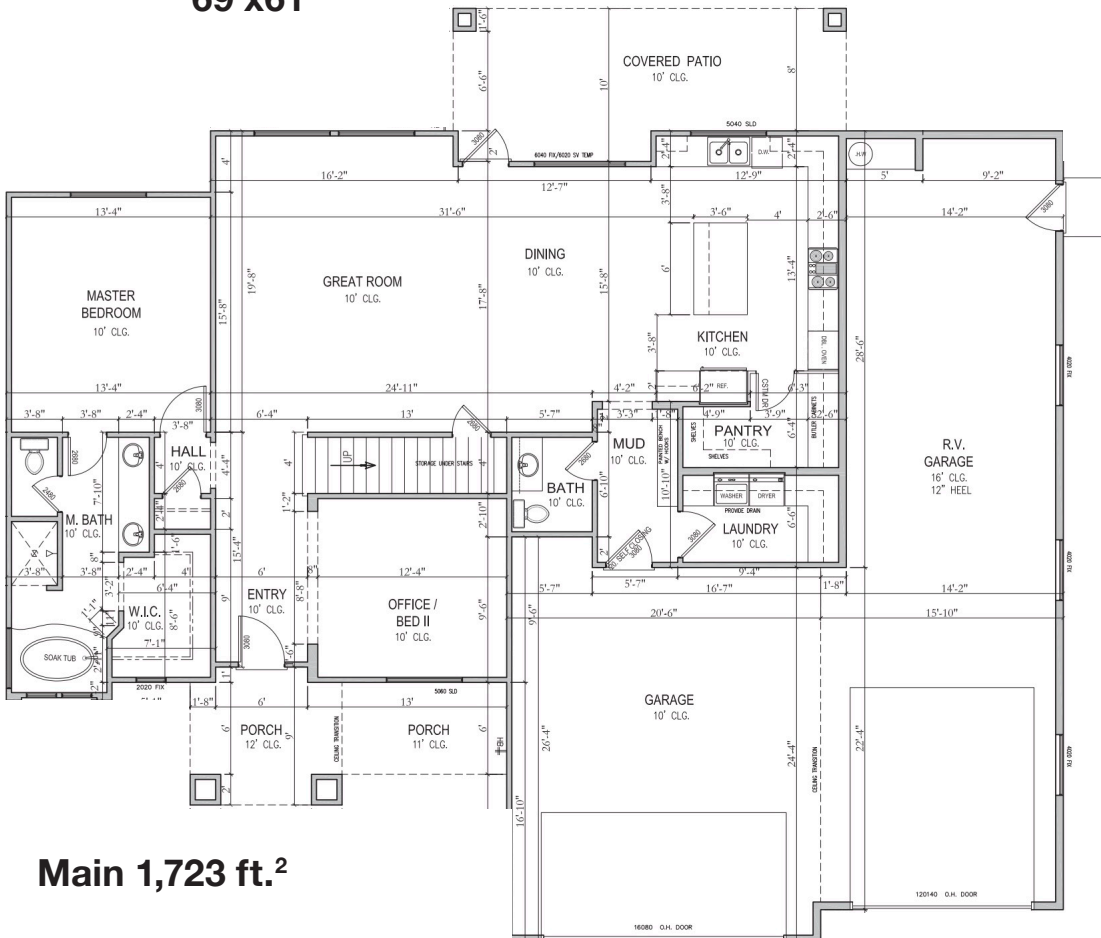
S&S Homes
 www.sshomes.info

2814 S Woodrow Lane
 Washington, UT 84780

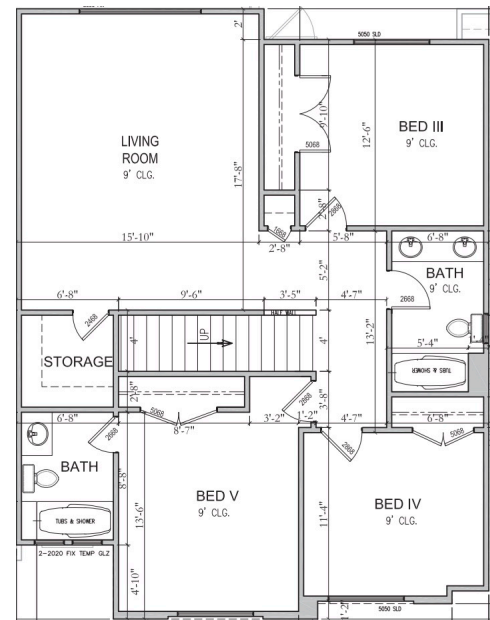


69'x61'

2,878 ft.²



Upper 1,155 ft.²



*Prices, estimated completion dates, elevations, styles, colors, features, and finished homes may vary from the architectural rendering and are subject to change without notice or obligation. *Square footage is estimated. [Scan QR CODE for more information on available homes and neighborhoods.](#)



Agent: Shae Leonard
 (435)668-3096 - shae@ssrealtysolutions.com

